



WORKSWELL WIRIS

Quick Start Guide

Package Content

Confirm that the package contains the items listed below.

- WIRIS head with chosen lens
- Calibration certificate
- USB Flash drive 32 GB
- HDMI cable
- Power supply cable
- Servo cable (2x)
- Software license CorePlayer
- Download Card
- Quick Start Guide
- Hard transport case

What else do you need?

Before you start using your Workswell WIRIS, make sure that you have all the equipment listed below to hand.

- Power source (7 to 28 V DC, 1.5 A)
- Radio system with 2 available channels (or USB2.0 Keyboard)
- Wireless video link with HDMI (or Display)

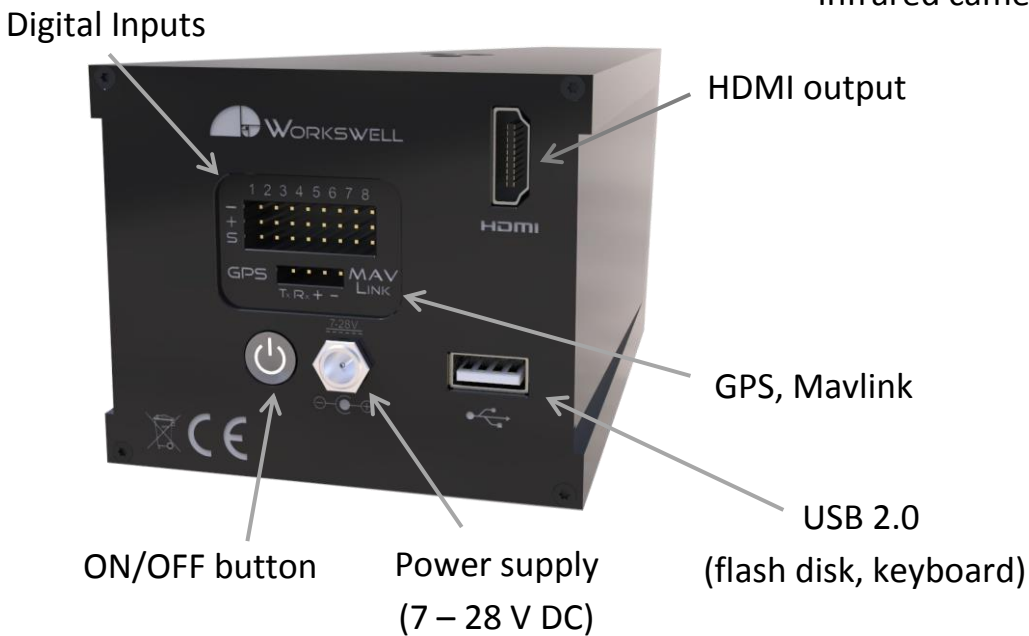
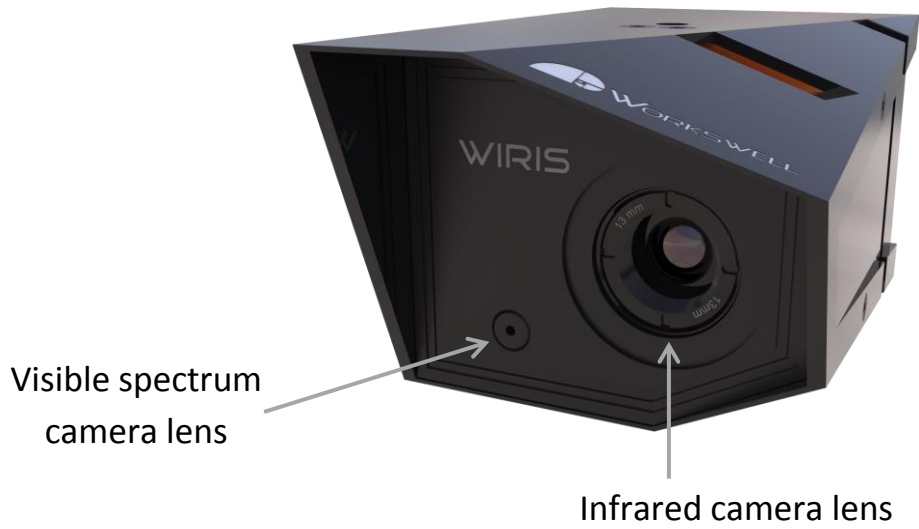
User Manual

User Manual is available in electronic form on the website:

<http://www.workswell.eu/documents/>



WIRIS Head



Focusing the infrared camera

Short distance



Long distance

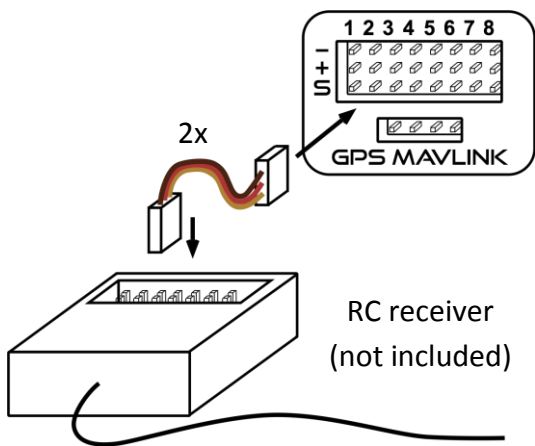
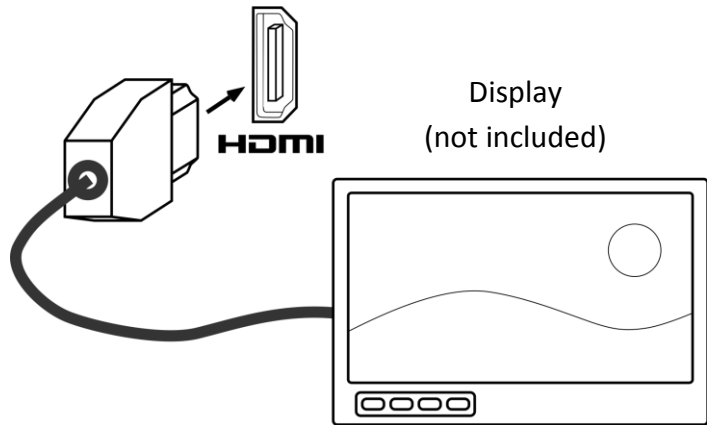


Workswell WIRIS



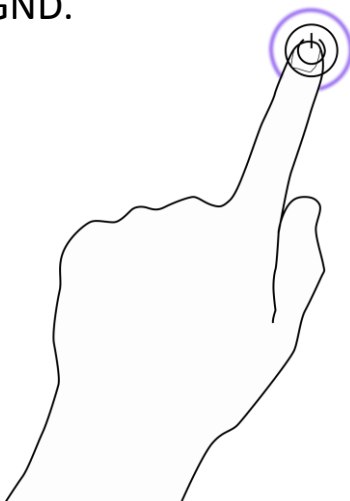
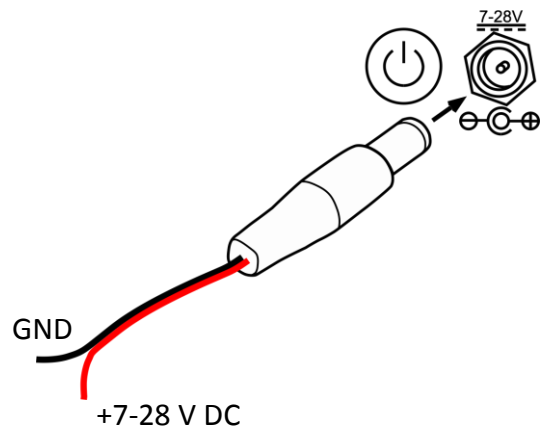
How to start?

- 1) Connect the system to a wireless video link or a monitor using HDMI cable (included).



- 2) Connect the system to a standard RC receiver using at least 2 servo cables (included). Use input 1 and 2 in order to control main functions.

- 3) Connect the power supply using power supply cable (included). Red wire is +7 to +28V DC, black wire is GND.

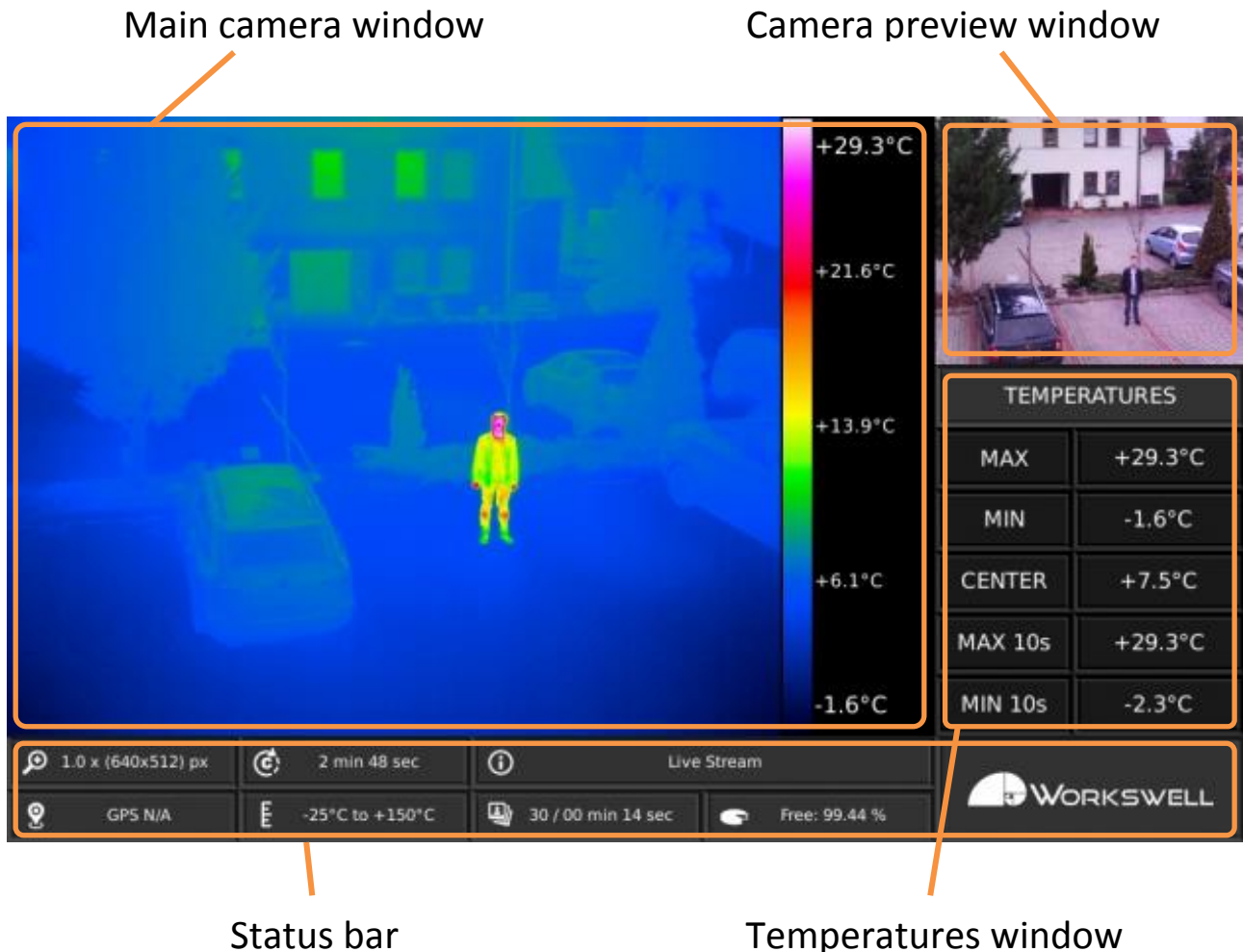


- 4) Press the on/off button. The system will start in few seconds.



Screen layout

As soon as the system starts, you will see the following screen.



- **Main camera window** shows live stream from selected camera. You can switch between infrared and visible spectrum camera during the flight.
- **Camera preview window** shows live stream from camera that is not shown in Main camera window.
- **Status bar** brings you most important information about the system.
- **Temperatures window** informs you about temperatures in the measured scene.

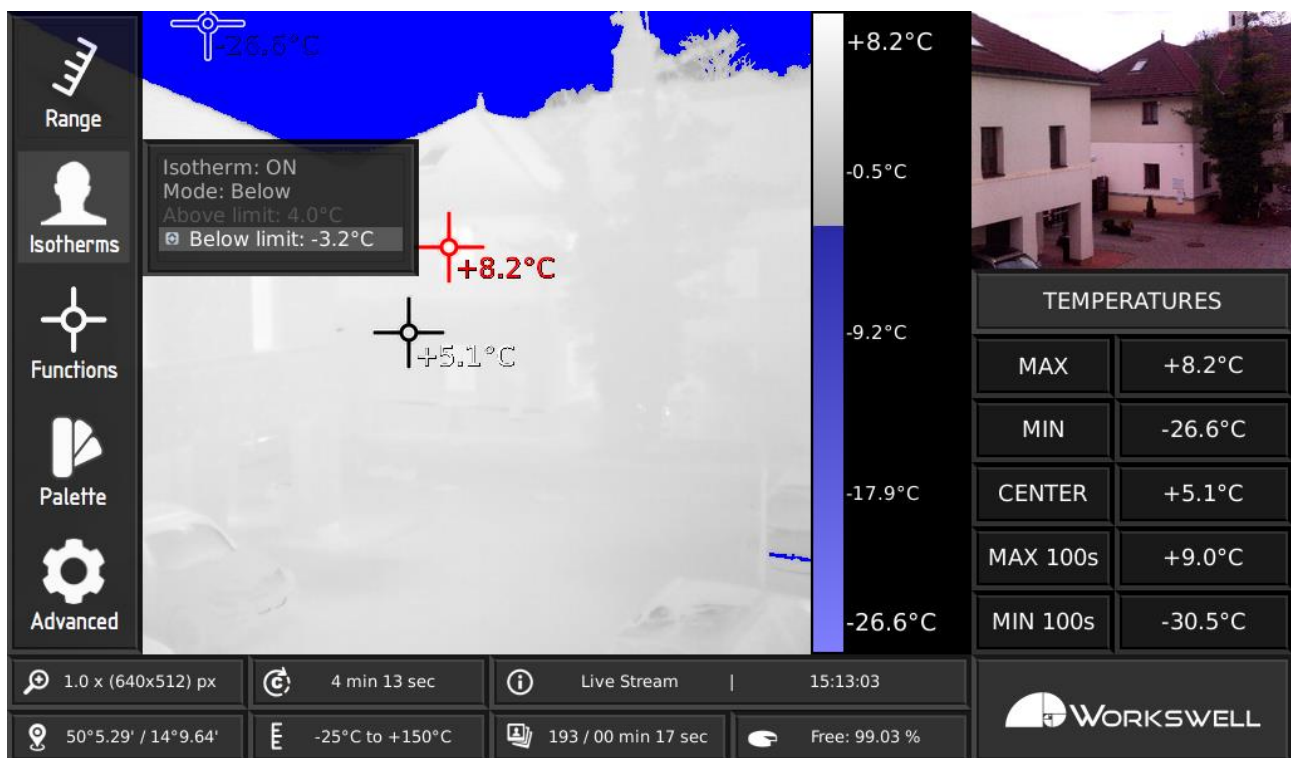


System control

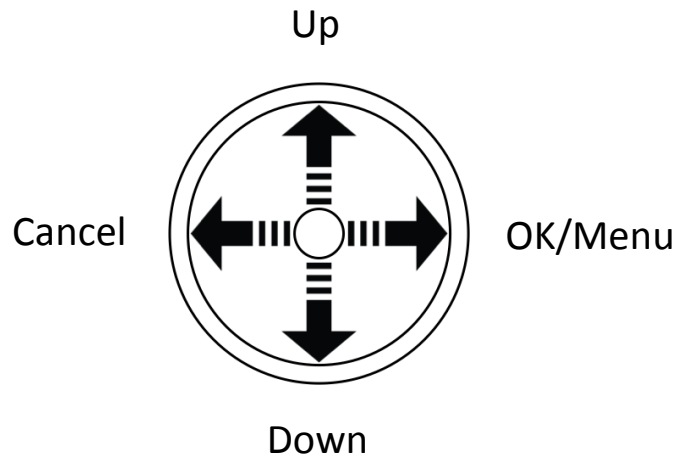
Workswell WIRIS is designed to be controlled remotely using standard RC system. For this case, WIRIS system is equipped with 8 digital inputs. First two inputs serve as the Up/Down and OK/Cancel buttons. The others can be used as a shortcut to important functions (mode switching, recording video, image capturing, zoom, etc.).

It is also possible to control the system on the ground using standard USB2.0 keyboard.

All the settings can be done via the system menu. The menu can be opened by switching the digital input 2 to OK state or by clicking the Enter key on a keyboard.



It is recommended to use a joystick for navigation in the menu. If connected as recommended, the joystick has the following behaviour.



Digital Input	Keyboard	Function
1	Up/Down	Up/Down
2	Enter/Esc	OK/Cancel
3	F6	Capture (default)
4	F7	Record (default)
5	F5	Change mode (default)
6		Not used
7		Not used
8		Not used

How to turn the system off?

Press and hold the on/off button for 3 seconds. The LED in the button starts blinking which means the ongoing shutdown. The system will be off in about 15 seconds. Please do not unplug the power supply during shutdown.





Contacts

Sales Department

Adam Švestka, MSc., MBA

Mobile: +420 725 955 464

E-mail: adam.svestka@workswell.cz

Company contact details

Mobile: +420 725 877 063

E-mail: info@workswell.eu

Web: www.drone-thermal-camera.com

Headquarters

Libocka 653/51b

160 00, Prague 6

Czech Republic

Branches

Mezirická 100

756 61, Roznov p. R.

Czech Republic

Univerzitní 1

010 08, Zilina

Slovak Republic

